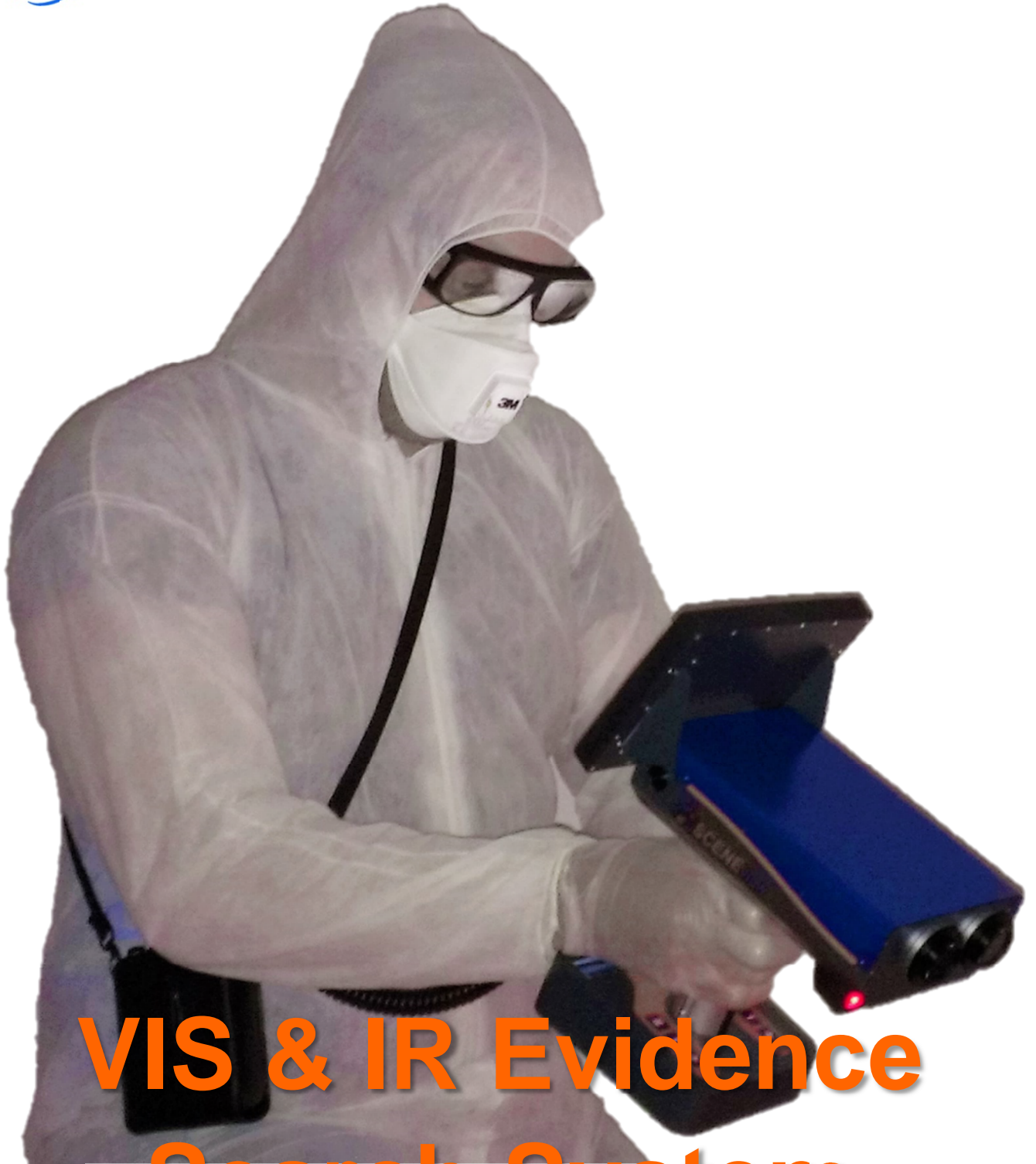




**SCENE**view



**VIS & IR Evidence  
Search System**

for laboratory and crime scene use





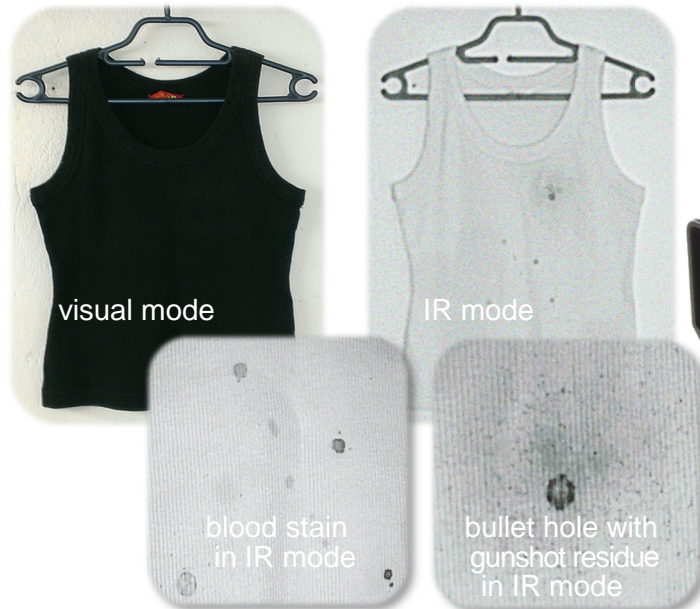
## System Concept

Evidence found at a crime scene, such as blood or body fluids can yield valuable information about the circumstances and progression of a crime. Some more obvious blood stains may be seen on various surfaces with the naked eye, but better results can be obtained with an IR sensitive camera.

**SCENEview** is a fully autonomous system for the search for, analysis of, and documentation of various types of evidence at the crime scene.



# SCENEview



visual mode

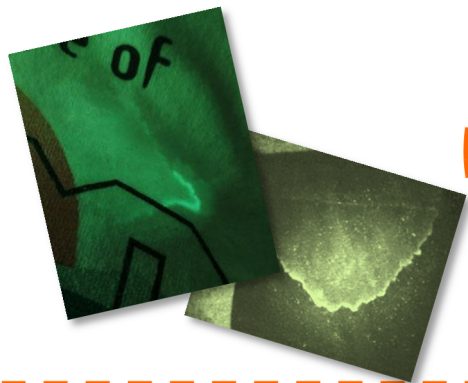
IR mode

blood stain in IR mode

bullet hole with gunshot residue in IR mode

Attestor Forensics' **SCENEview SV700** is the perfect tool for the search and documentation of blood spatter patterns at a crime scene. Due to its modular and expandable design, it is also perfect for other types of evidence, like other body fluids.

Integrated 850nm IR illumination, auto- and manual focus, and one-click recording features make **SCENEview** simple to use. Images and video can be easily transferred via USB.



## SV800

Chemical reagents like Luminol or derivatives that give off chemoluminescence when in contact with blood are often used, however, the luminescence reaction may be faint and can only be reproduced a limited number of times. Too much reagent can also dilute the stain itself.

Our solution to this is the **SV800** model, with an additional integrated ambient light amplifier camera, specifically designed to be sensitive to this type of light. Optimal search results are possible even when the crime scene cannot be darkened perfectly and when the reagent is so faint that it cannot be seen with the naked eye. Less chemical developer being needed for photography means the possibility to repeat and reproduce the effects for a subsequent documentation and a lower risk of damaging evidence.



Luminol application with long exposure mode



Luminol application in LUM amplifier mode

## Light Source Compatible

**SCENEview** is compatible with our full range of light sources, expanding your options for evidence viewing and photography. Our light sources applications cover everything from body fluids and bone to stains and fibers.



## BASIC and PRO Versions

**SCENEview BASIC** versions can be upgraded from the standard 5MPix camera versions to upgraded **PRO** versions with an enhanced 10MPix camera for higher resolution images and a zoom function.

## SCENEview Kits

Any version of **SCENEview** can be purchased as a bundled equipment kit. Currently, we offer crime scene and laboratory kits, but any equipment package can be further customized or ordered with additional accessories\*.

### LAB KIT:

- **SCENEview**
- 2x 18V/2 Ah rechargeable Lithium-Ion batteries (typical operating time per battery > 60 min.)
- battery adapter with coiled cord (expandable from 300 to 1200 mm)
- 1x battery pouch with shoulder strap and belt clip
- 1x fast battery charger (typical charging time per battery < 30 min.)



### SCENE KIT:

- **SCENEview**
- solid, dust- & waterproof transport carry case (430 x 525 x 210mm) with laser cut foam inlay
- 2x 18V/2 Ah rechargeable Lithium-Ion batteries (typical operating time per battery > 60 min.)
- battery adapter with coiled cord (expandable from 300 to 1200 mm)
- 1x battery pouch with shoulder strap and belt clip
- 1x fast battery charger (typical charging time per battery < 30 min.)
- 1x padded carrying holster
- 1x padded neck strap
- 1x tripod mount adaptor



\*See back cover for additional accessory information, including remote controls and alternative power supply options.





**SCENEview** is designed to be highly portable and easy to use at the lab and crime scene. It has a compact DNA-safe design for easy cleaning, storage and transportation.

**SCENEview** can be used with a rechargeable battery at the scene, or with a power cord, for convenient benchtop use. The system can be fully controlled via the integrated controls on the base, or connected to external accessories, such as mice and keyboards, or used with our remote control options.

While it is most often used as a handheld system, we also offer a tripod adaptor accessory that will allow the system to be mounted on a variety of tripod models.

Any **SCENEview** can also be fitted with a **LIGHTcube** adaptor for use with all of our forensic light sources.



**SV700 BASIC**

- VIS & IR sensitive 5 MPix camera
- manual & auto-focus
- optical filter to enhance the IR absorption contrast (screw-on 37mm)
- integrated 850nm IR illumination and red orientation light
- integrated control computer with interface for external monitor, mouse and keyboard as well as USB pen drive
- 6.5" colour display
- integrated photo and video recording function

**SV800 BASIC**

- All the convenient features of the SV700
- light amplification up to x 70,000
- 1.3 MPix imaging interface
- optical screw-on 37mm filter to enhance Luminol luminescence contrast

**PRO UPGRADE**

- 10MPix camera upgrade
- Integrated on-screen zoom function

**ACCESSORIES**



**SVPWR 800**  
Mains Power Adaptor



**RCB & RCA 800**  
Basic & Advanced  
Remote Controls



**Hotshoe Adaptor**  
For mounting LIGHTcubes



**LIGHTcube**  
Modular Forensic Light Sources



**TA 800**  
Tripod Adaptor

**Authorised Distributor:**



**Attestor Forensics GmbH**  
Zeppelinstr. 28  
88410 Bad Wurzach  
Germany

[attestor@attestor-forensics.com](mailto:attestor@attestor-forensics.com)  
[www.attestor-forensics.com](http://www.attestor-forensics.com)

This is a product info brochure. Images might not be true to scale. Binding is solely the separately available technical specification. Attestor Forensics GmbH reserves the right to alter the design or specification without prior notice.

